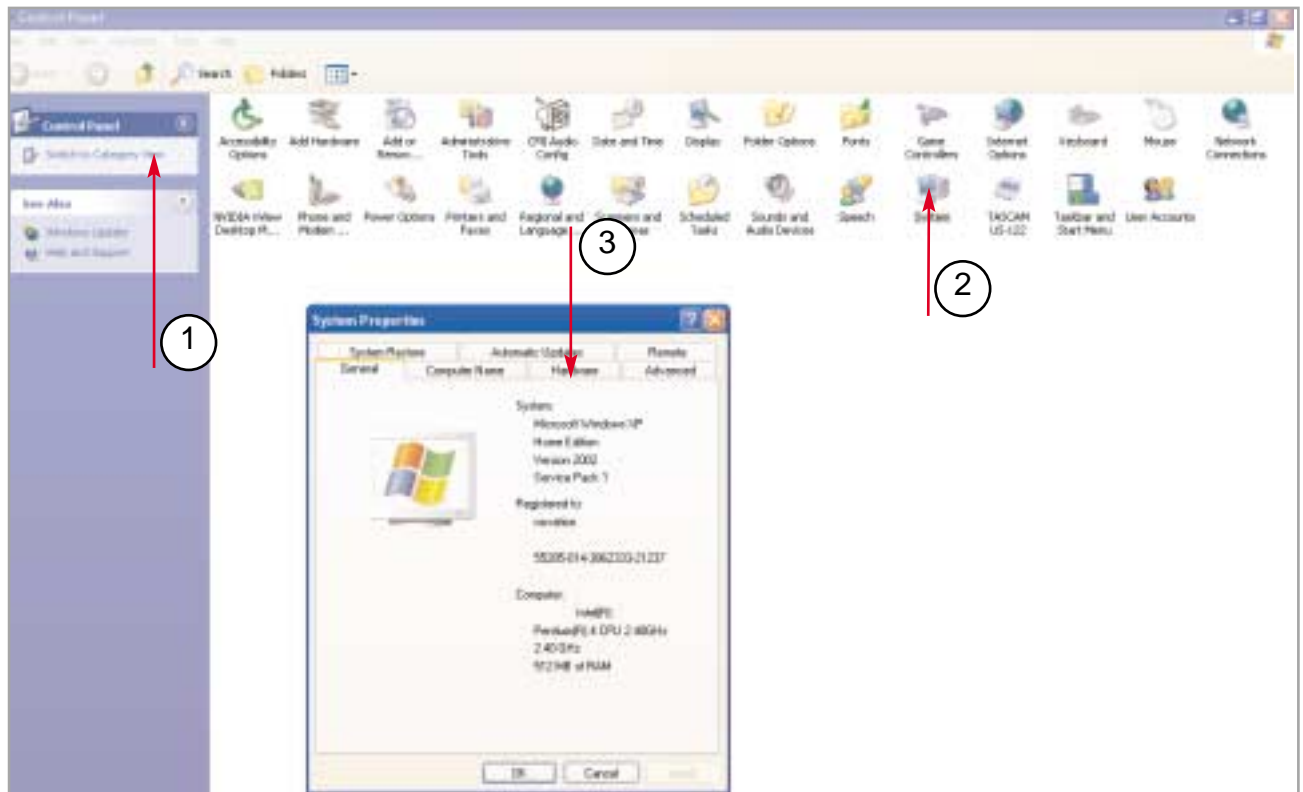


## Instructions for Updating the Windows MIDI Driver for the ReMOTE Audio / X-Station

An improved MIDI driver has been written for the X-Station. To install this in place of an existing X-Station MIDI driver connect the X-Station via USB to the Windows PC to be updated and turn the X-Station on. Drag the folder X-Station MIDI driver (found in the zip file of the X-Station download) to the desktop of the computer.

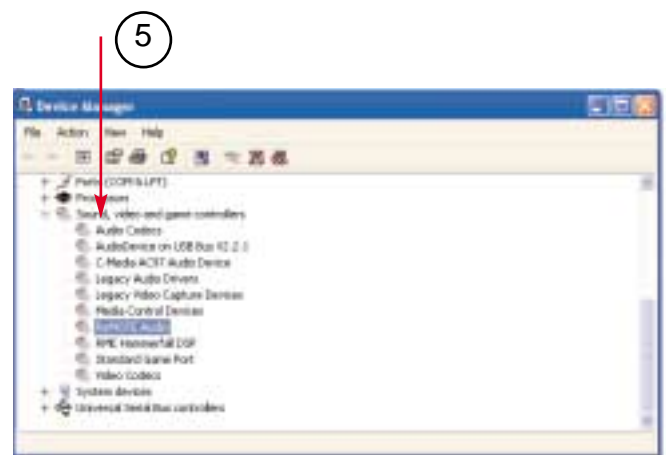
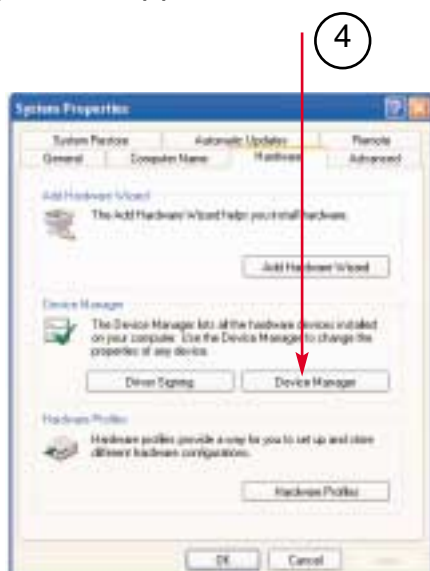
Click the start menu and go to settings to locate the Control Panel. Click the Control Panel. To the left of the screen there is an option that will toggle the view between Classic View and Category View (1). Set this to classic view (the option will then show "Switch to Category View").

In the main window click the System Icon (2). This brings up a box called 'System Properties'. Click the 'Hardware' tab within this box (3).



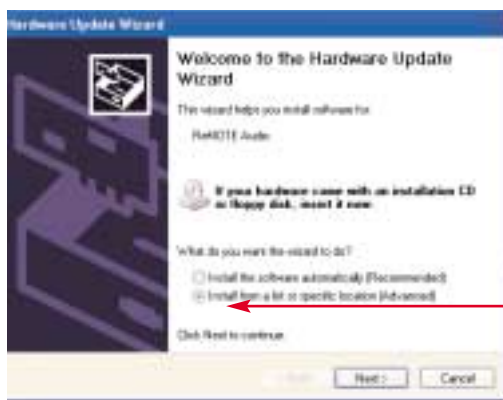
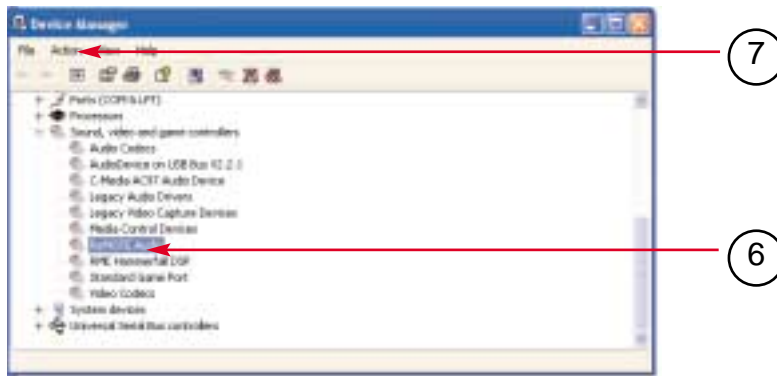
From the Device Manager section of the System Properties box click the 'Device Manager' button (4)

A list of categories of devices connected to the computer will be shown. Double click the category 'Sound, video and game controllers'. (5)

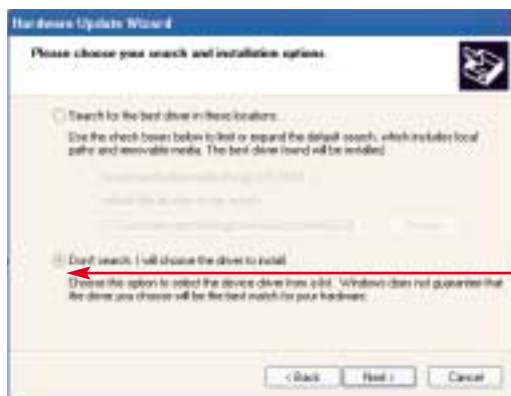


## Instructions for Updating the Windows MIDI Driver for the ReMOTE Audio / X-Station

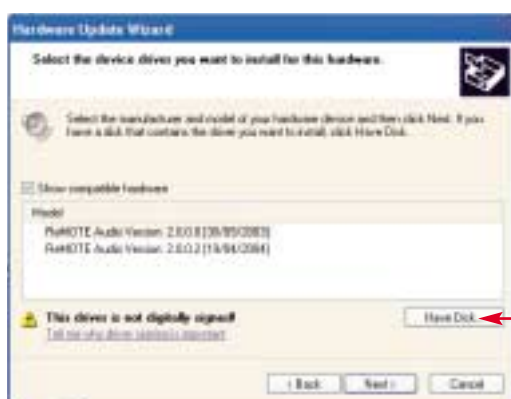
There will be an entry within this list for 'ReMOTE Audio'. Click this to highlight this entry(6). Click the 'Action' menu from the Device Manager Tool bar (7). Click the 'Uninstall' option. A box 'Confirm Device Removal' will appear to warn that the ReMOTE Audio is about to be uninstalled. Click the 'OK' button.



Turn the X-Station off. Turn the X-Station back on. After a few seconds a 'Found New Hardware Wizard' will appear on screen. It will show that the wizard helps install software for 'ReMOTE Audio'. Click the round button to select the 'Install from a list or specific location (Advanced) (8). Then click 'Next'.



From the next box, click the round button 'Don't search. I will choose the driver to install. (9) Then click the 'Next' button.

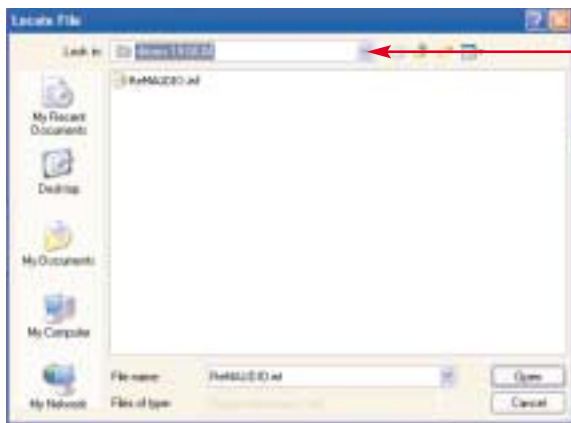


The computer will show a list of compatible hardware. Simply click the 'Have Disk..' button. (10)

## Instructions for Updating the Windows MIDI Driver for the ReMOTE Audio / X-Station



A box titled 'Install From Disk' will appear. Click the 'Browse...' button to search for the new driver.(11)



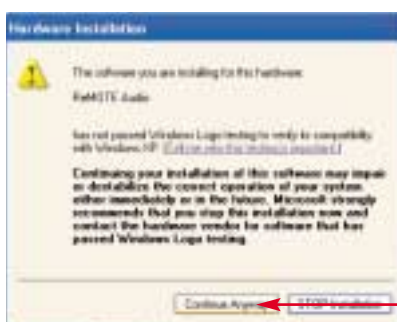
From the 'Locate File' box, click the 'Look In' drop down arrow (12). A list of folders on the computer will be displayed. Choose the folder that the new MIDI driver has been downloaded and unzipped to. Then click the 'Open' button.



The Install From Disk box will be shown once more. Click the 'OK' button. (13)



'The Found New Hardware Wizard' box will be shown again, click the 'Next' button. (14)



The driver will start to be installed. A warning box will appear to show that the driver has not passed Windows Logo testing. Ignore this warning by clicking the 'Continue Anyway' button (15).

## **Instructions for Updating the Windows MIDI Driver for the ReMOTE Audio / X-Station**



The driver will now be installed in full. When this is complete the Found New Hardware Wizard will show that the installation has finished. Click the 'Finish' button to close the wizard (16).

Any remaining device manager windows can now be closed. Reboot the computer before using the X-Station.